

# Alessandra Dodich & Chiara Cerami

## *Social cognition assessment in mild neurocognitive disorder: a joint effort of the SIGNATURE consortium*

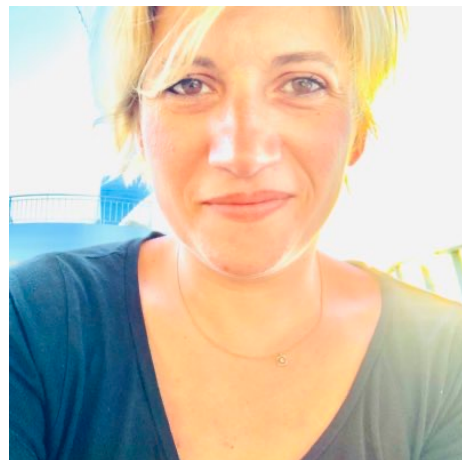
Standard neuropsychological batteries are generally used as a gateway for the etiopathological diagnosis of mild neurocognitive disorder (mNCD). Despite the fact that the Diagnostic and Statistical Manual of Mental Disorders, fifth edition (DSM-5) emphasizes the importance of assessing social cognition domain in NCD patients, changes in social cognition and behavior are not systematically investigated in clinical practice. Multiple experimental social cognition tasks have been developed, but translational efforts towards the clinic, including psychometric and diagnostic validations, are in fact still limited. Besides, no clear consensus has been reached on the most relevant sub-domains of social cognition to be assessed, as well as on the most appropriate tasks, among those available. Overall, these open issues call for multicenter international efforts to effectively implement social cognition measures in memory clinics for the assessment of mNCD. Hereby, we present a collaborative international consortium for the definition of the "Clinical Use of Social coGNnition measures for the AssessmentT of neURocognitive Disorders" (SIGNATURE Initiative) involving methodologists, experts, clinicians and stakeholders from different countries.

This initiative aims at evaluating state-of-the-art, perceived needs and feasibility in the use of social measures in memory clinics, and at defining clinical expert priorities for their implementation in clinical settings. The core of the initiative is represented by a combined top-down (experimental neuropsychology) and bottom-up (clinical neuropsychology) approach strategy, which may add crucial information for the translation of social tasks in clinical setting, and for their integration in harmonized neuropsychological batteries with an ultimate benefit for mNCD diagnosis.



**Alessandra Dodich**

<https://webapps.unitn.it/du/en/Persona/PER0222522/Curriculum>



**Chiara Cerami**

<https://www.icsmaugeri.it/professionisti/chiara-cerami?p=pubblicazioni-scientifiche>